



**REGIONAL SPECIALISED METEOROLOGICAL CENTRE-TROPICAL CYCLONES, NEW DELHI
SPECIAL TROPICAL WEATHER OUTLOOK**

DEMS-RSMC SPECIAL TROPICAL CYCLONES NEW DELHI DATED 10.08.2022

SPECIAL TROPICAL WEATHER OUTLOOK FOR NORTH INDIAN OCEAN (THE BAY OF BENGAL AND ARABIAN SEA) VALID FOR NEXT 120 HOURS ISSUED AT 0230 UTC OF 10.08.2022 BASED ON 0000 UTC OF 10.08.2022.

SUB: DEPRESSION OVER INTERIOR ODISHA AND ADJOINING CHHATTISGARH WEAKENED INTO A WELL MARKED LOW PRESSURE AREA OVER CHHATTISGARH AND ADJOINING EAST MADHYA PRADESH

THE DEPRESSION OVER INTERIOR ODISHA ADJOINING CHHATTISGARH MOVED WEST-NORTHWESTWARDS DURING PAST 06 HOURS AND WEAKENED INTO A WELL MARKED LOW PRESSURE AREA AT 0000UTC OF TODAY, 10TH AUGUST, 2022, OVER CHHATTISGARH AND ADJOINING EAST MADHYA PRADESH.

IT IS LIKELY TO MOVE WEST-NORTHWESTWARDS, AND GRADUALLY WEAKEN INTO A LOW PRESSURE DURING NEXT 12 HOURS.

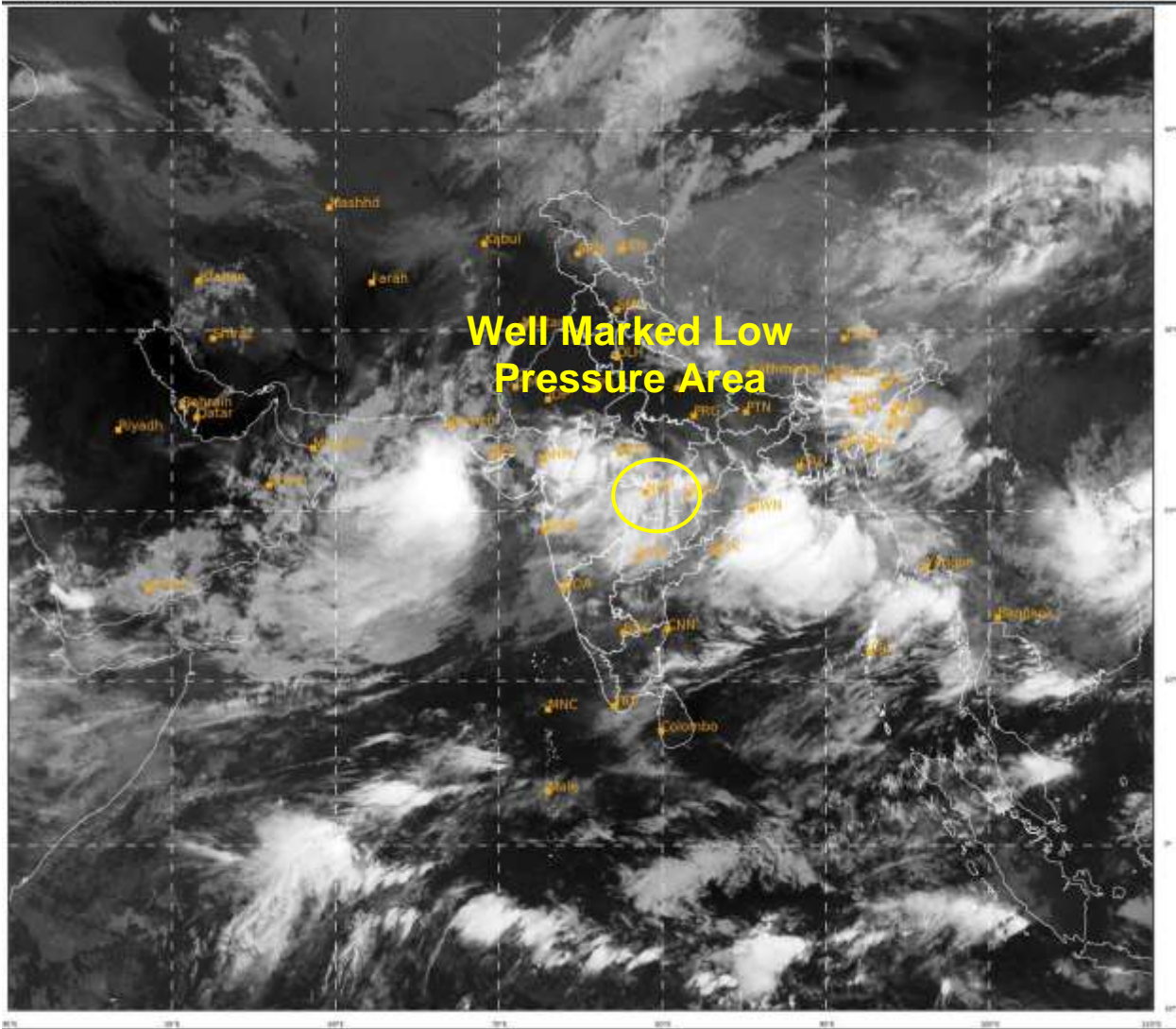
AS PER INSAT-3D IMAGERY AT 0000 UTC, SCATTERED TO BROKEN LOW AND MEDIUM CLOUDS WITH EMBEDDED INTENSE TO VERY INTENSE CONVECTION LAY OVER ODISHA, CHATTISGARH, COASTAL GANGETIC WEST BENGAL & NORTHWEST BAY OF BENGAL. MINIMUM CLOUD TOP TEMPERATURE IS MINUS 93 DEGREE CELSIUS.

THIS IS THE LAST BULLETIN IN ASSOCIATION WITH THE SYSTEM. HOWEVER REGULAR WEATHER BULLETINS SHALL CONTINUE FROM THE RESPECTIVE METEOROLOGICAL CENTRES, REGIONAL METEOROLOGICAL CENTRES AND NATIONAL WEATHER FORECASTING CENTRE (NWFC), NEW DELHI, INDIA METEOROLOGICAL DEPARTMENT IN ASSOCIATION WITH IT'S REMNANT LOW PRESSURE SYSTEM.

(Dr. RK JENAMANI)
Scientist F, Cyclone Warning, New Delhi

SAT : INSAT-3D IMG
IMG_TIR1 10.8 um
LIC Mercator

10-08-2022/(0000 to 0026) GMT
10-08-2022/(0530 to 0556) IST



012

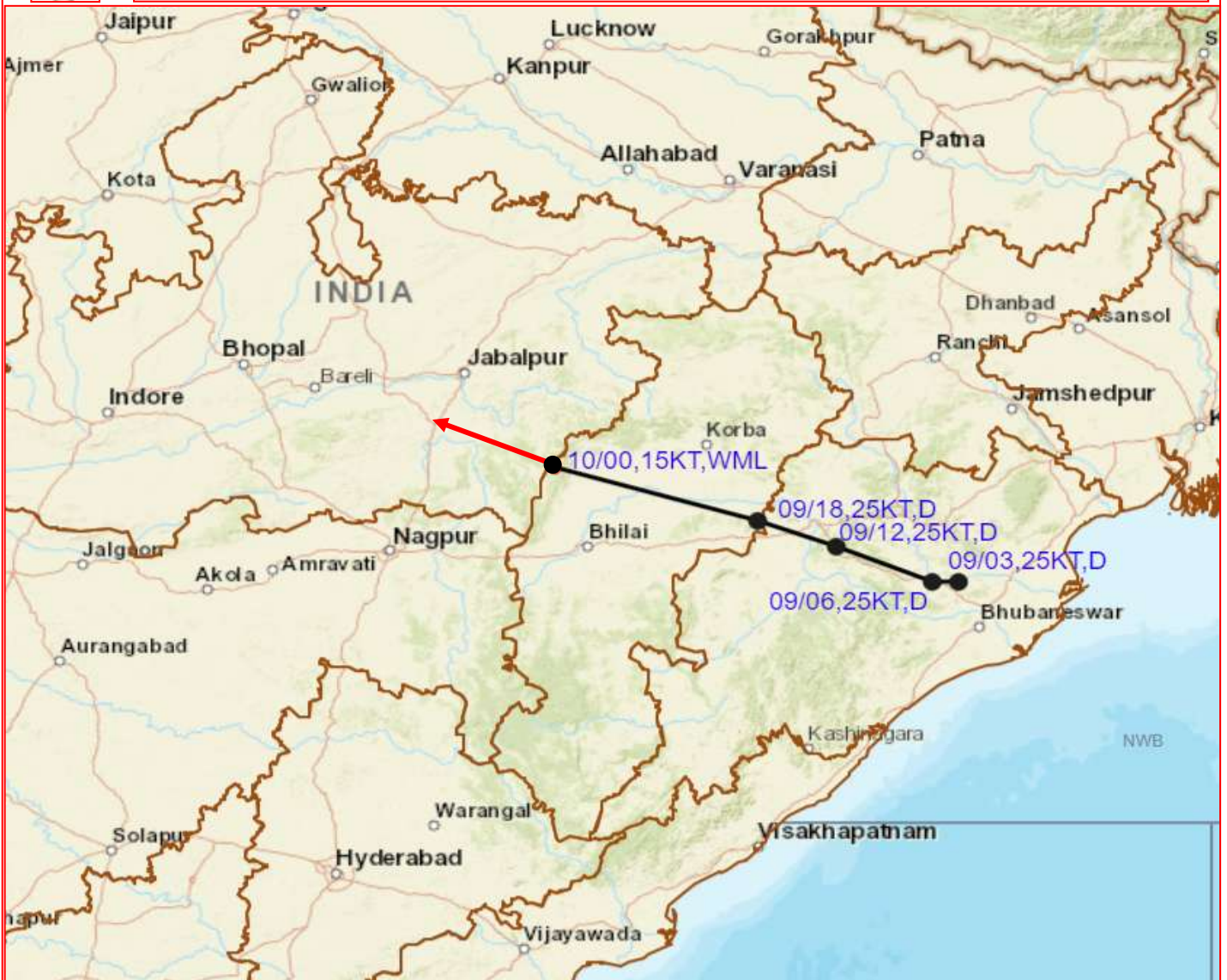
044

IMD, DELHI

Cloud distribution: (a) Isolated: <25%, Scattered:25-50%, Broken: 51-75%, Solid:>75%, Convection Intensity: (a) Weak: Cloud Top Temperature (CTT) >-25°C, (b) Moderate: CTT: - 25°C to -40°C, (c) Intense: CTT: - 41°C to -70°C and (d) Very Intense: : Less than -70°C
PROBABILITY OF CYCLOGENESIS (FORMATION OF DEPRESSION): NIL: 0%, LOW: 1-33%, , MODERATE: 34-66% AND HIGH: 67-100%
This is a guidance Bulletin for WMO/ESCAP Panel Member countries. Visit respective National websites for Country specific Bulletins



OBSERVED TRACK OF DEPRESSION OVER ODISHA AT 09TH - 10TH AUGUST, 2022



DATE/TIME IN UTC

IST=UTC + 0530

L: LOW PRESSURE AREA

WML: WELL MARKED LOW PRESSURE AREA

D: DEPRESSION (17-27 KT)

DD: DEEP DEPRESSION (28-33 KT)

CS: CYCLONIC STORM (34-47 KT)

SCS: SEVERE CYCLONIC STORM (48-63KT)

VSCS: VERY SEVERE CYCLONIC STORM (64-89 KT)

ESCS: EXTREMELY SEVERE CYCLONIC STORM (90-119 KT)

SuCS: SUPER CYCLONIC STORM (\geq 120 KT)

● LESS THAN 34 KT

○ 34-47 KT

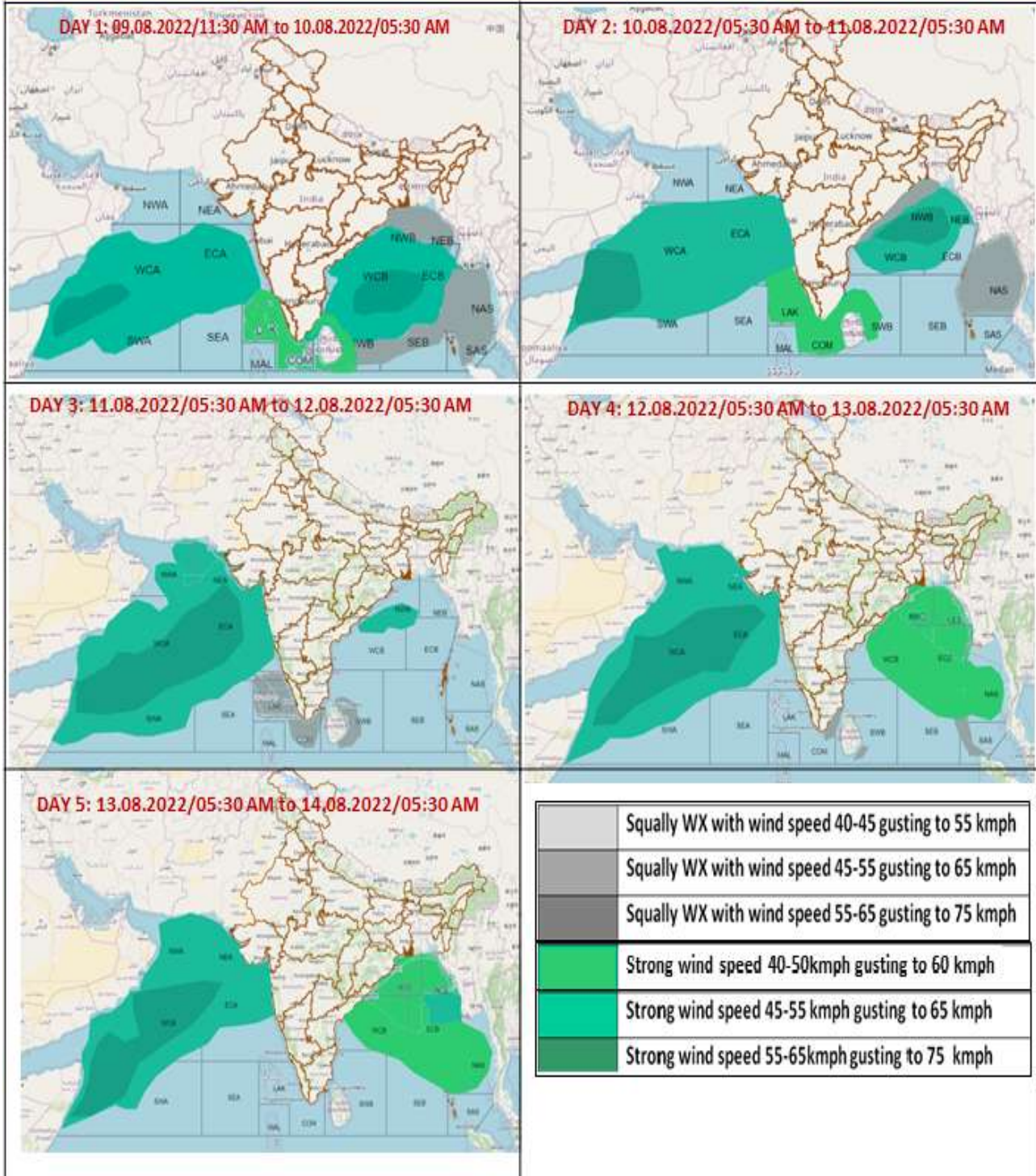
○ \geq 48 KT

— OBSERVED TRACK

— FORECAST TRACK

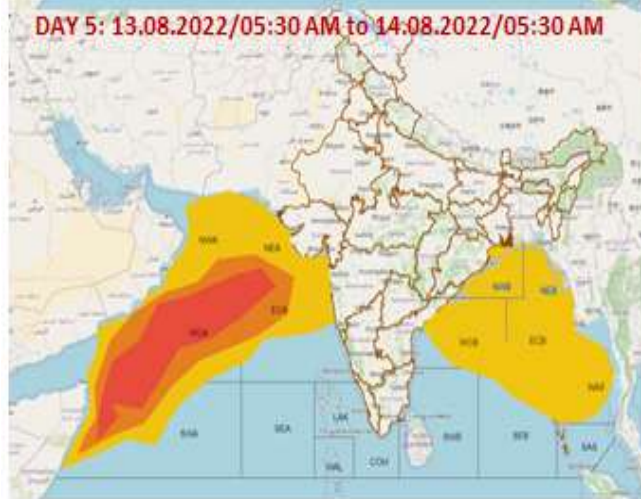
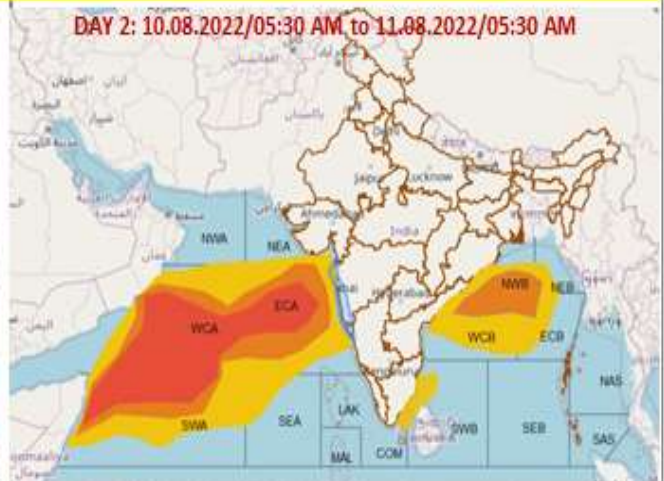
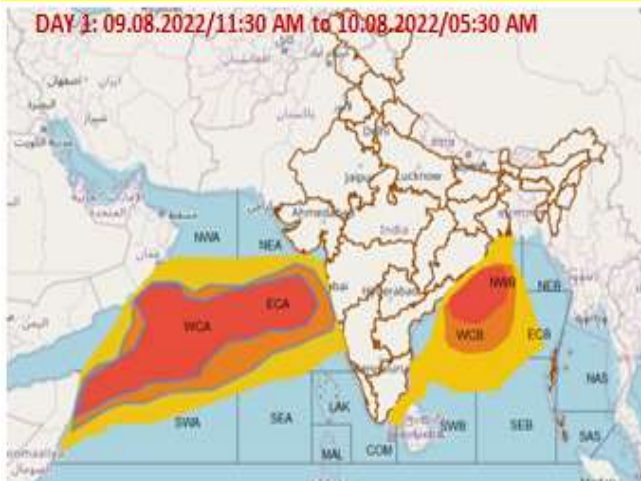
▲ CONE OF UNCERTAINTY

Fishermen Warning Graphics



Cloud distribution: (a) Isolated: <25%, Scattered:25-50%, Broken: 51-75%, Solid:>75%, Convection Intensity: (a) Weak: Cloud Top Temperature (CTT) >-25°C, (b) Moderate: CTT: - 25°C to -40°C, (c) Intense: CTT: - 41°C to -70°C and (d) Very Intense: : Less than -70°C
PROBABILITY OF CYCLOGENESIS (FORMATION OF DEPRESSION): NIL: 0%, LOW: 1-33%, , MODERATE: 34-66% AND HIGH: 67-100%
 This is a guidance Bulletin for WMO/ESCAP Panel Member countries. Visit respective National websites for Country specific Bulletins

Probability of exceedance of maximum sustained winds ≥ 45 kmph



Probability of exceedance	
	Low (1-33%)
	Moderate (34-67%)
	High (68-100%)

Cloud distribution: (a) Isolated: <25%, Scattered:25-50%, Broken: 51-75%, Solid:>75%, Convection Intensity: (a) Weak: Cloud Top Temperature (CTT) >-25°C, (b) Moderate: CTT: - 25°C to -40°C, (c) Intense: CTT: - 41°C to -70°C and (d) Very Intense: : Less than -70°C
PROBABILITY OF CYCLOGENESIS (FORMATION OF DEPRESSION): NIL: 0%, LOW: 1-33%, , MODERATE: 34-66% AND HIGH: 67-100%
 This is a guidance Bulletin for WMO/ESCAP Panel Member countries. Visit respective National websites for Country specific Bulletins